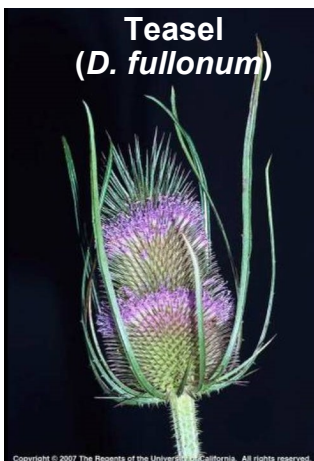
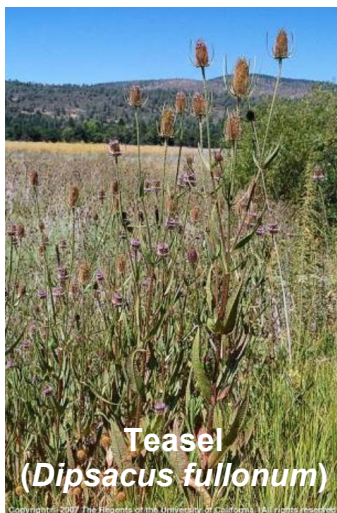


# Weed Alert!

## Teasel



# Teasel

(*Dipsacus fullonum* & *D. sativus*)

**Mature Size** Shoulder



## Description

- Up to 6 ft. plant with stiff prickly stems topped by a 1½-4 in. long cylindrical flowerhead often with a circle of lavender petals
- Narrow spines below flowerheads curve upwards; as flowerheads dry and petals fall off, a cone of hard spines remains
- Wrinkled, opposite leaves are prickly underneath along a distinct white midvein
- Up to 18 in. leaves merge at the stem, forming a “cup” that holds water
- Is a low-growing rosette the first year
- Reproduces by seed
- Spread by wind, water, animals, horticulture
- Native to Europe, Asia, and North Africa



**Bloom Period** Jun - Aug

**Habitat** Coastal prairie, grassland, moist sites, disturbed areas

**2-Minute Removal** Dig

