

Cal IPC

High Stakes for California Rangelands
California State University-Chico
October 10, 2014



The Value of California Rangelands

- Of the 100 million acres in California, 38 million acres are range and pasture land. Over 19 million acres of this grazed land is privately owned.

The California beef cattle industry contributes 3.3 billion dollars to the state economy, with almost 5 million head raised annually.



The Value of California Rangelands

- California's rangelands provide grazing resources as well as the most diverse habitat values for both special status and common species
 - » Vernal Pools
 - » CTS
 - » CRLF
 - » Raptors



The Value of California Rangelands

- The California Rangeland Conservation Coalition



- 100+ Signatories
 - USFWS
 - Ducks Unlimited
 - Defenders of Wildlife
 - Environmental Defense
 - Audubon California
 - Endangered Species Coalition
 - California Resource Agency
 - SJ Raptor/Wildlife Rescue Center
 - Institute for Ecological Health
 - California Invasive Plant Council

The Value of California Rangelands

- The California Rangeland Trust



- 285,000 Acres with easements
- 100+ Applicants with over 400,000 acres

Invasive Plants On Annual Rangelands

We are Losing the War

- Yellow Star Thistle
- Purple Star Thistle
- Medusahead
- Barbed Goatgrass
- Perennial Pepperweed
- Artichoke Thistle
- Stinkwort
- Salt Cedar/Tamarisk



Rangeland Benefits For All Californians

- » Wildlife Habitat
- » Carbon Sequestration
- » View shed
- » Recreation Opportunities
- » Food Production
- » Water Quality
- » Air Quality
- » Cultural Preservation

Ranching Economics 101

- Expenses - Based Upon 100 Cows @ 12 acres/CYL
- 1200 AUMs @ \$25/AUM
 - Pasture \$ 30,000
 - Hay/Supplement/Mineral \$ 15,000
 - Vet/Medicine/Preg Exam \$ 3,000
 - Freight \$ 1,000
 - General Overhead
 - Taxes Insurance \$ 36,000
 - Labor Interest
 - Living Draw Depreciation
 - Accounting
 - **Total** **\$ 85,000**

Ranching Economics 101

Income-Based Upon 100 Cows (90% Weaned Calf Crop/ Retain 10 heifers)

45 Steer Calves	600 lbs	@ \$2.00	\$ 54,000
35 Heifer Calves	500 lbs	@ \$1.80	\$ 31,500
10 Cull Cows	1,100 lbs	@ \$.80	<u>\$ 9,350</u>
Total			\$ 94,850

Ranching Economics 101

- With the \$ 9,850 estimated net profit from this 100 Mother Cow operation, there is limited cash to wage the war on weeds that may be necessary.

$$\text{\$ 9,850} / 1200 \text{ acres} = \text{\$ 8.21} / \text{Acre}$$

- Weed management practices on rangelands must be based upon an IPM analysis, with industry economics playing a crucial role.
- Following analysis, with significant emphasis upon economics, the rancher\landowner may choose to do nothing.

The Consequences of Doing Nothing

Cal-IPC website states that, nationwide, invasive weeds in pastures and farmlands cost an estimated 33 billion dollars annually

University of Nebraska study of North Dakota rangelands indicated that a 40% cover of leafy spurge reduced total grazing capacity by 50%

EBRPD estimates that YST infestations reduce recreational use of parklands by 25 to 30%

As per a study conducted by Colorado State University, 100 million acres of the US are weed infested, with an annual increase of 6 to 8%

Weapons of War on Rangeland Weeds

General Categories

Mechanical

Chemical

Biological

Rangeland limitations

Topography

Scale

Cost\Economics - Labor, fencing

Regulations

Effectiveness

Weapons of War on Rangeland Weeds

Mechanical

- Hand Removal Cost and topography
- Disking Topography
- Mowing Topography
- Prescriptive Burns Economics /Regulations

Weapons of War on Rangeland Weeds

Chemical

Regulations are a primary factor relative to product used and application location

Back Pack

Cost

Ground Rig

Topography

Aerial

Cost

Biological

Rust/fungal pathogen

Scale

Beetles

Scale

Conservation Grazing\Hoof Impact

Timing, economics

Conventional Grazing

Timing

Collaborative Partners

- CDFA \ CDFW
 - Legislation-Buchanan AB2402
 - WMA funding and organizational restoration
 - Research
 - Application – On the ground
- County Agriculture Departments
 - WMA Mapping, Planning and Distribution
 - Education

Collaborative Partners

Utility Providers

- Water Districts
- PG&E, SPP

Vegetation Management Specialists

Cal Trans

Current Practices

Local\Regional Park and Open Space Districts

- EBRPD
- SC Open Space Authority
- Mid Peninsula Open Space District

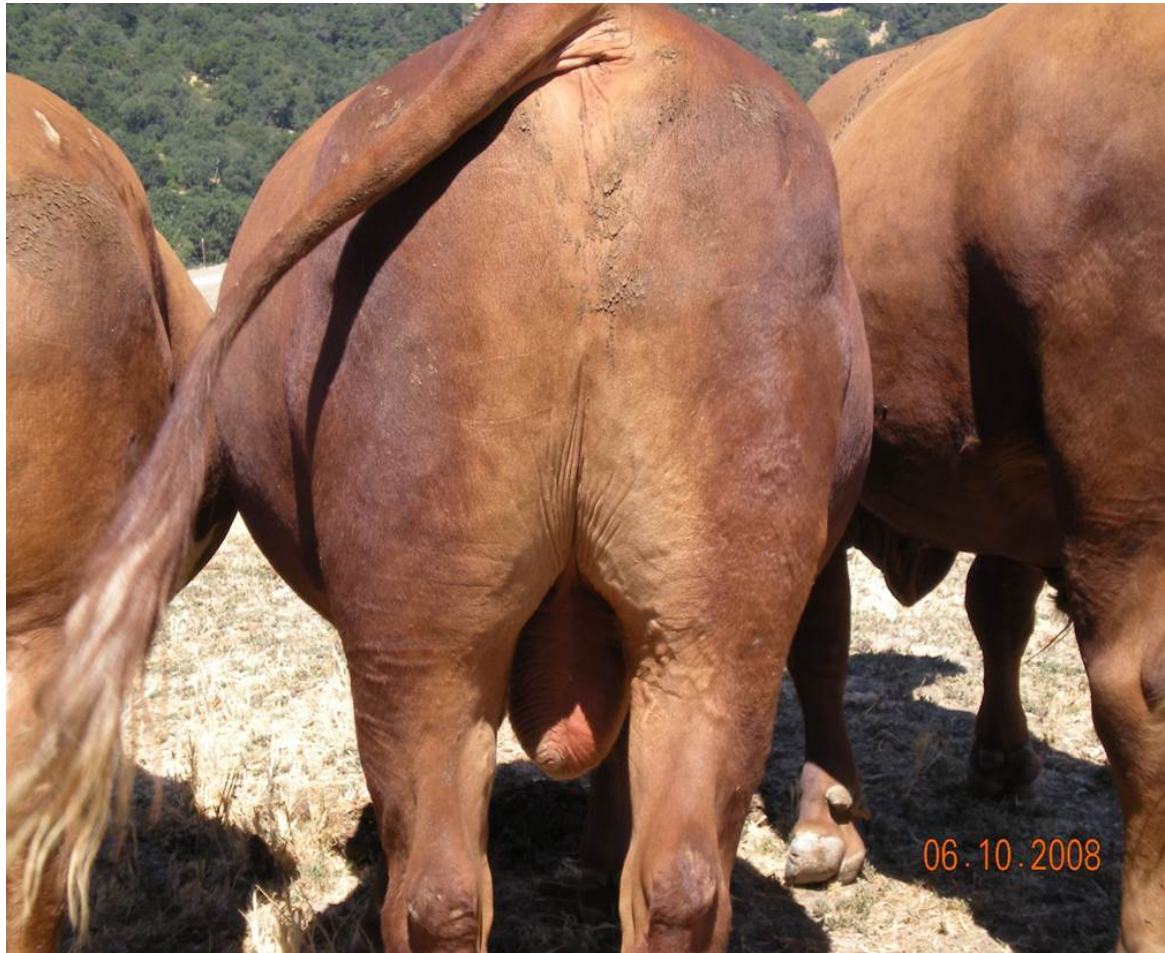
IPM specialists and PCAs

Collaborative Partners

- 2011 Cal Fire – SRA Fee (Fire Prevention Fund)
 - 800,000 structures @ \$115- \$150
 - Rural Residential Education
 - I-Zone Fire Fuel Reduction

- HOAs (Home Owners Associations)
 - I-Zone Fire Fuel
 - Landscape Infestations

The End



Wednesday, October 22,
2014